

# **With and by the People:**

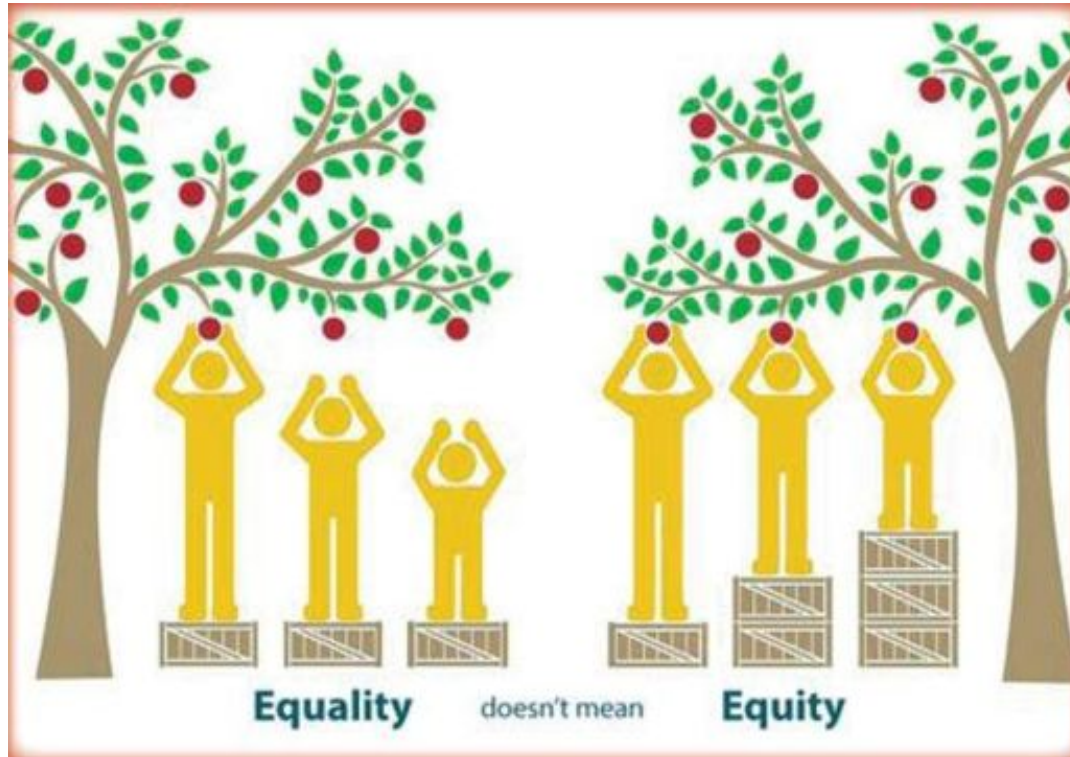
**How community-centered CHIPs drive equity and  
reimagine health improvement**

OPHA Annual Conference

October 10, 2017

Marilou Carrera

# Equity vs Equality



# Why an equity-oriented CHIP?

Health inequities exist and persist in communities of color

One size approach does NOT fit all

Upstream considerations of root cause

Communities know what works

# Putting the “E” in CHIP

2014 Racial and Ethnic Disparities  
Report card was a wake up call:

- Persistent health inequities in communities of color
- Gaps in service delivery
- Highlighted the effectiveness of community driven services vs traditional services



Image Source: [Veganstreet.com](http://Veganstreet.com)

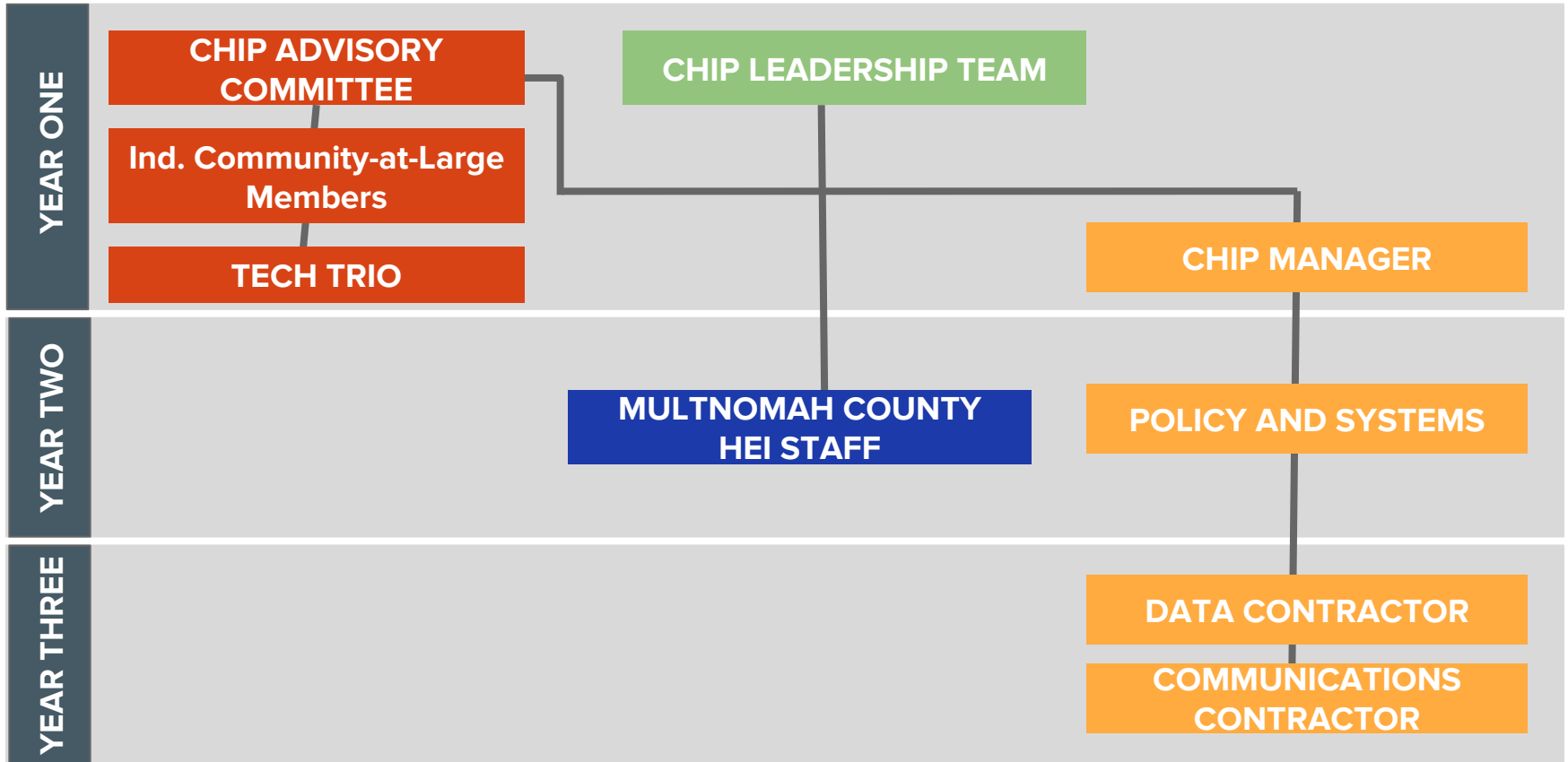
# Project Leadership Team



Urban League  
of Portland



# Holding each other accountable



# CHIP Process



# Year 1: Engaging Community

**24**  
EVENTS

**12**  
DISTINCT  
COMMUNITY  
GROUPS

**4** MAPP  
ASSESSMENTS

**5**  
PRIORITY  
AREAS

**2**  
EVENTS  
IN-LANGUAGE

**224**  
PARTICIPANTS

**71**  
OBJECTIVES



# Year 1: Priorities

- Access to Culturally and Linguistically Responsive Healthcare
- A Neighborhood Home for All
- Essential Community Services & Resources
- Support of Family & Community Ways
- Transformative Change Toward Equity & Empowerment

# Year 2: Co-own | Co-lead | Collaborate

Data, everywhere data

- Connecting dots between community recommended strategies and priorities
- Environmental scan of opportunities
- Prioritize strategies and connect to work already being done

Partnering with County leadership

- Movement from advisory role to thought partner on CHIP Leadership Team
- Building capacity for CHIP within Multnomah County

# Year 3: Implementation Planning

Summer / Fall 2017: Opportunity Teams Convene

- Implementation Teams:
  - Community Investment
  - Creating a Culturally Diverse Workforce
  - Community Health Equity
- Support Teams:
  - Crosswalk
  - Response
  - CHIImplementation

Strong Communications Team

# **CHIP: A Plan is Just the Start**

- CHIP as a living document
- CHIP as a community building tool

# Questions?

Marilou Carrera, Community Health Improvement Plan Manager -  
[marilou@oregonhealthequity.org](mailto:marilou@oregonhealthequity.org)